



Analytics&Reporting

the most value-added module you can choose for your repository

The module brings to DSpace and DSpace-CRIS advanced analytics capabilities with a self-service reporting tool for institutional repositories and CRIS/RIMS

THE TOOL

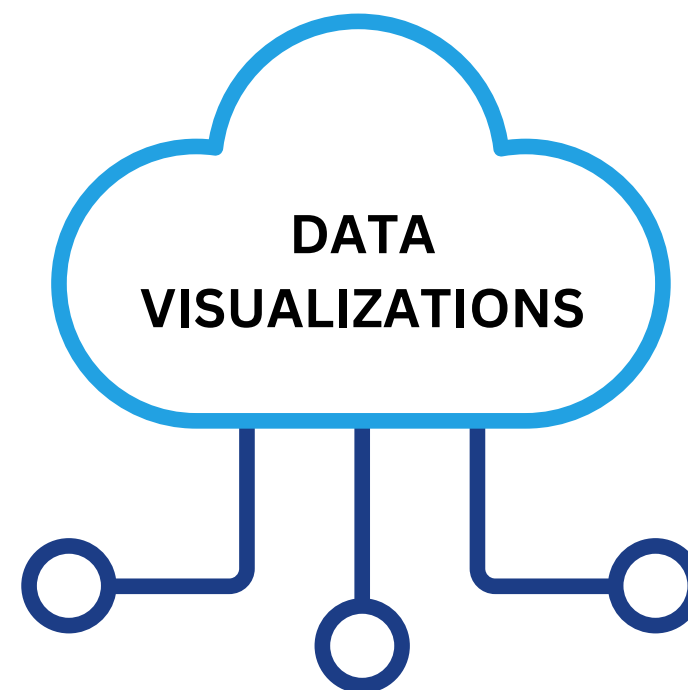
Is based on the open source stack
OpenSearch

Data are processed at the preferred frequency in an incremental way to guarantee efficient performance and extend the analysis capacity

Administrators have access to a web-based environment. Dashboard and reports can be set up via wizards, setting query, dimensions and aggregation criteria. Apply graphical visualizations from dozens of options

It provides self-service analytics capabilities, rows and columns level security and automatic periodic generation of reports

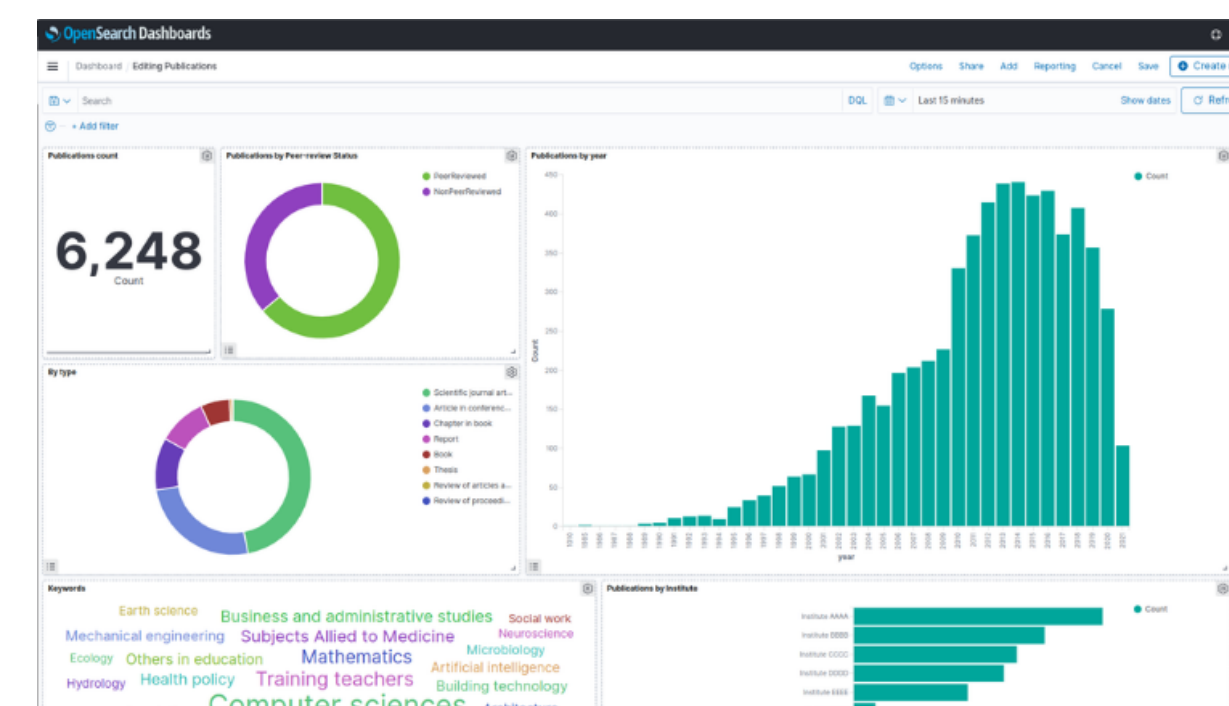
tables with the actual raw data used to build the visualization can be included to provide confidence in what is reported



The dashboards and visualizations can be shared with other authenticated users via a direct link or an embedded code

All the graphs in a dashboard interact with each other so that users can drill down the analysis

The best Add-On module to monitor your KPI's



Default publication dashboard: total count, by review status, by type, time distribution



Advanced set-up service

The analytics module can collect any custom information stored in the repository or can extend the repository information with known data available elsewhere, accessible, via a standard protocol and format